



Preparing people to lead extraordinary lives

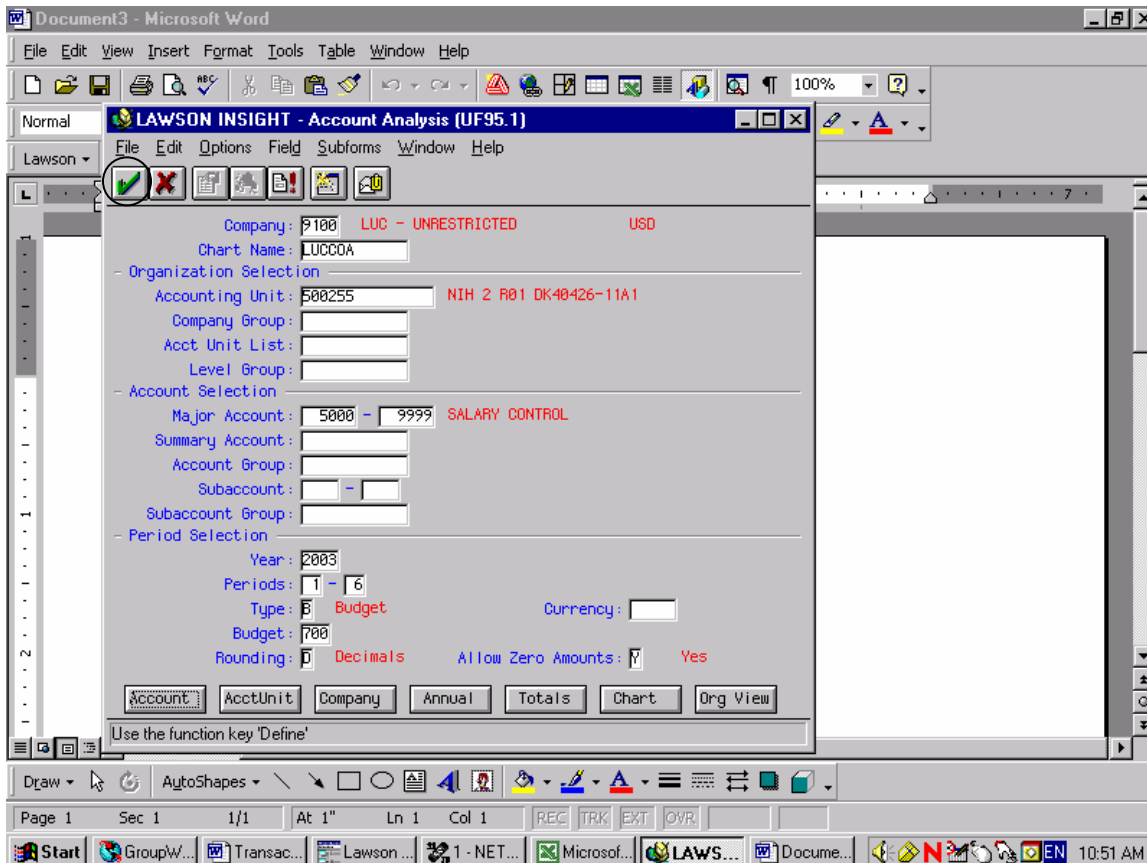
Current Available Balance

Log into Lawson

Click the F8 key to transfer to the UF95 (Account Analysis) screen. Complete the information in the following fields:

- Company:
- Chart Name: LUCCOA
- Accounting Unit:
- Major Account: 5000-9999
- Year: Current fiscal year
- Periods: period 1 through the current period
- Type: Budget
- Budget: 700
- Rounding: Decimal

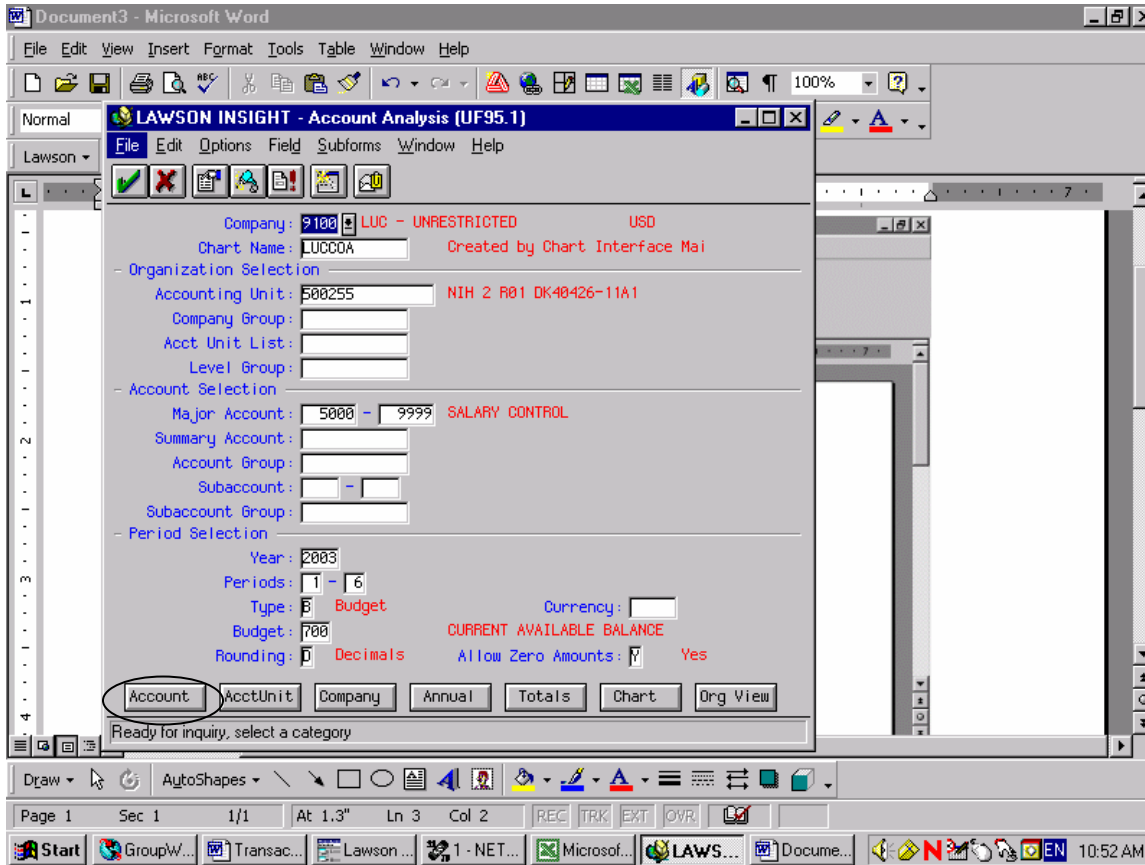
Click green check mark.





Preparing people to lead extraordinary lives

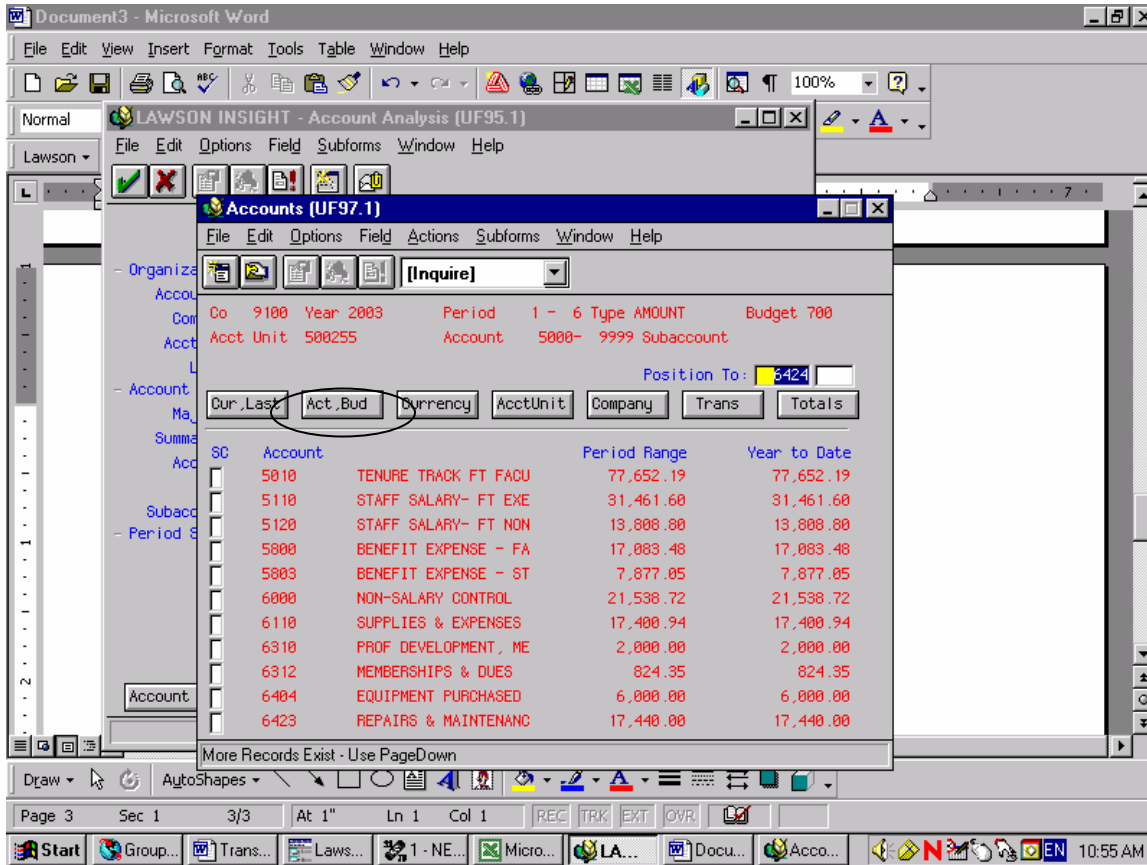
Click the Account button.





Preparing people to lead extraordinary lives

Click the Act,Bud button.





Preparing people to lead extraordinary lives

Click the AcctUnit Button.

The screenshot shows a software window titled "YTD Actual vs. Budget (UF97.4)". The interface includes a menu bar (File, Edit, Options, Field, Actions, Subforms, Window, Help) and a toolbar with various icons. The main data area contains a table with columns for SC, Account, Actual, Budget, and Available. The "Available" column is highlighted. Below the table, there is a section for "Year to Date" totals. The "AcctUnit" button is circled in the interface.

SC	Account	Actual	Budget	Available
	5010	36,428.58	77,652.19	41,223
	5110		31,461.60	31,461
	5120	4,643.27	13,808.80	9,165
	5800	8,014.29	17,083.48	9,069
	5803	552.15	7,877.05	7,324
	6000		21,538.72	21,538
	6110		17,400.94	17,400
	6310		2,000.00	2,000
	6312		824.35	824
	6320			
	6404		6,000.00	6,000

Year to Date	Actual	Budget
	77,652.19	77,652.19
	31,461.60	31,461.60
	13,808.80	13,808.80
	17,083.48	17,083.48
	7,877.05	7,877.05
	21,538.72	21,538.72
	17,400.94	17,400.94
	2,000.00	2,000.00
	824.35	824.35
	6,000.00	6,000.00
	17,440.00	17,440.00

The Available column provides the current available account balances.



Preparing people to lead extraordinary lives

The Actual column provides total current year expenditures. The Budget column provides total available balance at the beginning of the current fiscal year. The Available column provides the current available accounting unit balance.

The screenshot shows a software window titled "YTD Actual vs. Budget (UF97.4)". The main window contains a table with the following data:

SC	Co	Accounting Unit	Actual	Budget	Available
9100	500255		92,488.17	414,531.69	322,043

Below the table, there are several controls and status indicators:

- Budget:** 700
- Decimals:** 0
- Allow Zero Amounts:** Yes
- Buttons:** Account, AcctUnit, Company, Annual, Totals, Chart, Org View
- Status Bar:** Page 5, Sec 1, 5/5, At 1.1", Ln 2, Col 1, REC, TRK, EXT, OVR
- Taskbar:** Start, Gro..., Tra..., La..., 1..., Mic..., LA..., Do..., Ac..., Y..., EN 10:56 AM