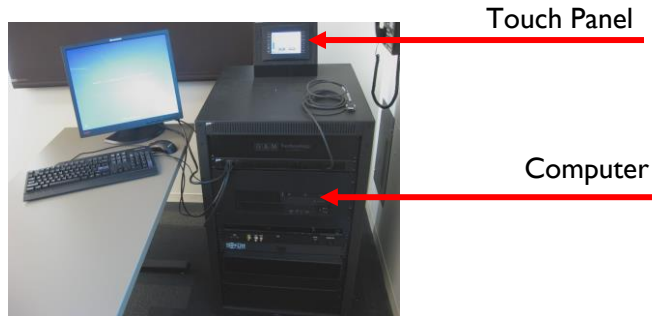
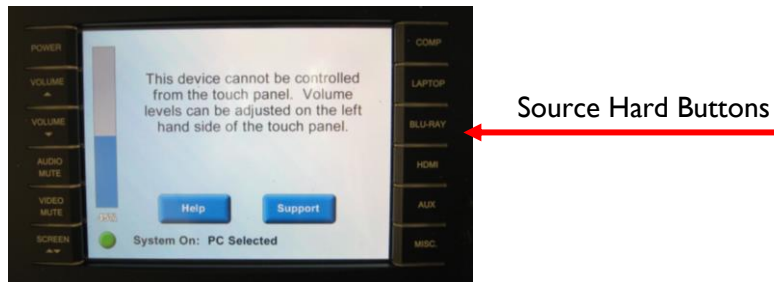


The Electronic Classroom consists of these basic units: 1) **Data Projector**; 2) **Computer and Monitor**; 3) **Touch Panel**; and 4) **Equipment Rack** includes: Auxiliary Power, Auxiliary Plate and Cables, Computer, and Blu-ray Player

To Activate System:



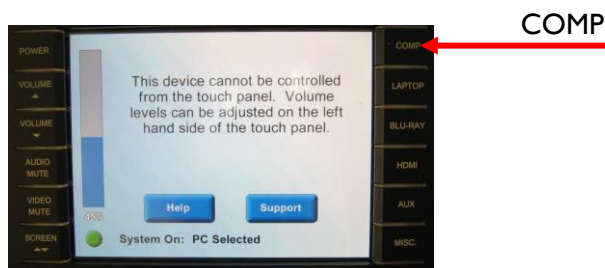
Locate the **Touch Panel**, and select the source you wish to use with the hard buttons on the right hand side.



Please note – If the system is not powered down properly you may have to shut down the system properly (Explained below; see **System Shutdown**)

To Display from the Computer Workstation:

1. Turn on the computer and monitor, if not already on.
2. Press the **COMP** button on the Touch Panel.



3. If you do not see the computer image (**you may have to wait for Projector to warm up ~1 min**): Press **COMP** once more.

To Log in to a Workstation:

1. At the prompt, hit the Ctrl+Alt+Del keys on the keyboard.
2. Type your Username and Password and click the blue arrow button.

To Display a Blu-ray/DVD:

1. On the **Touch Panel**, press the **Blu-ray** hard button.
2. Insert your disc, and press play via the Touch Panel.
3. If you do not see the image of the disc, you may need to reselect **Blu-ray** on the **Touch Panel**.

To Display from your Laptop:

1. Using the VGA and audio cables provided to you, connect your laptop.



Laptop Cable Inputs

2. On the **Touch Panel**, press the **Laptop** button.
3. If you don't see the laptop's image on the screen, toggle the laptop's Function LCD/CRT (Display) button and re-select **Laptop** from the **Touch Panel**.

Please Power Down the System Before You Leave the Room

System Shutdown:

Using the Touch Panel, press the **POWER** hard button, and then press **YES**.

