

ITS Executive Steering Committee (ITESC)

Agenda and Materials
April 20, 2007



Preparing people to lead extraordinary lives

Agenda

- PIRG - Jim
 - History
 - PII Breaches
 - Policy Review
- ATC BlackBoard Course Archive Policy Review - Carol
- New Projects in FY08 Round Two Budget Requests - John P. & Susan
 - Review Round Two Requests
 - SIS Reporting
- LUMC follow-up - Susan
- Student Equipment Recommendations - Susan
- Subcommittee Reports & Scheduling - Susan

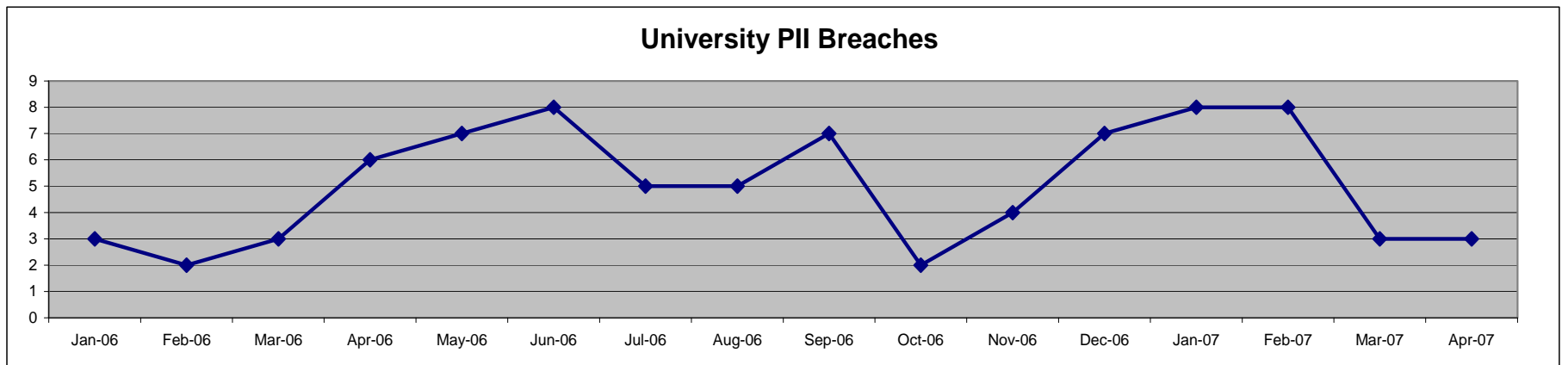


PIRG History

- Fr. Garanzini received a letter in July 2006 from USF regarding the risk of his Personal Identifiable Information (PII) – thumb drive in a stolen backpack
- PII Examples: Social Security Number, credit card and bank information, driver's license number, health records, education details, specific demographic data
- Definitions vary slightly from state to state on what PII is and how to protect it
- Already in 2007, 22 higher-Ed institutions have exposed PII on over 265,000 people
- Incidents include lost/stolen hardware, hacking, malicious insiders, accidental posting of information

PII Breaches (privacyrights.org)

Date	University Count	Q1 Counts	University "Highlights"	Other Institutions
Jan 2006	3		Pitt, Notre Dame	H&R Block
Feb 2006	2		Old Dominion	Fed Ex, Ernst & Young
Mar 2006	3	8	Georgetown	Chicago Olympic Funding , US Marines, Fidelity Investments
Apr 2006	6		Purdue , Texas	Dept of Defense, Mastercard
May 2006	7		Ohio U	Wells Fargo
Jun 2006	8		Miami OH, Kentucky, Western IL	Ernst & Young, IRS, US Navy, ING
Jul 2006	5		USF , Tennessee, Northwestern , Iowa	Sentry Insurnace
Aug 2006	5		Kentucky, Wichita State	AFLAC, US Dept of Transportation
Sep 2006	7		Virg Comm., Minnesota, Colorado	City of Chicago , Lloyd's of London, General Electric
Oct 2006	2		Texas, Minnesota-Spain	US Census Bureau, T-Mobile, Chicago Voter Database
Nov 2006	4		Virginia, Cal State	Starbucks, American Cancer Society
Dec 2006	7		UCLA, Mississippi State, Emory	Aetna, Boeing
Jan 2007	8		Notre Dame , Arizona, Rutgers, Eastern IL	Chicago Board of Elections , IRS
Feb 2007	8		Missouri, Nebraska, Johns Hopkins	US Dept of Veteran Affairs
Mar 2007	3	19	Montana, Idaho	Radio Shack
Apr 2007	3		UCSF, Pitt Med Center	Chicago Public Schools , TurboTax



PIRG Policy Review

- Data Classification
- Physical Security of Loyola Protected/Sensitive Data
- Electronic Security of Loyola Protected/Sensitive Data
- Loyola Protected/Sensitive Data Identification
- Disposal of Loyola Protected/Sensitive Data
- Loyola Encryption Policy
- Personal Information Security Compliance Review Protocol
- Data Breach Response Protocol



Budget Review, New Projects

FY08 Round Two Requests

<u>Project Sponsor</u>	<u>71 - Information Technology</u>	<u>Priority</u>	<u>F/T</u>	<u>Salaries</u>	<u>Fringe Benefits</u>	<u>Non-Salary</u>	<u>FY 2008 Requested New Spending</u>	<u>One Time Cost</u>	
Finance	TouchNet MarketPlace Annual Subscription Fee	1	Mandatory			31,548	31,548		
Pres. Office	Intracampus Video Conferencing	1	Fund in FY07			50,000		50,000	
Academic Affairs	Fusion Reporting (scorecards, dashboards, reports)	1	} Samples in following slides			235,640	42,500	193,140	
Academic Affairs	OBIEE (Oracle Business Intelligence Enterprise Editi	1				164,000	29,000	135,000	
Info. Commons	Media Lab Specialist Approved 3/28/07 BRT	1		1.00	\$ 65,000	\$ 18,200	\$ 83,200	\$	
Pres. Office	Enterprise Imaging	2	Pending			300,000	50,000	250,000	
Pres. Office	Personal Information Risk Group: Disk Encryption	2	Fund in FY07			72,000 12,000	12,000	60,000	
Total Information Technology				1.00	\$ 65,000	\$ 18,200	852,188 743,188	\$ 248,248	688,140 578,140

New: Last week, BlackBoard put forward a proposal for a “true-up” associated with the growth of our environment (a second application server added last fall and a significant increase in disk space usage). Academic Affairs and ITS will be reviewing BlackBoard’s proposal against the possibility of hosting this application ourselves to determine budget impact.



SIS Reporting Roadmap

- Build vs. Buy options
- “Buy” approach has two layers:
 - Business Intelligence Layer (OBIEE)
 - Pre-Defined Metadata and Analytics Layer provides dashboarding and ad-hoc reporting capability (Fusion)
- Benefits of “buy” approach
 - Leverages the role based security that is already defined in our student system (PeopleSoft).
 - Drill-down capability into the transaction database
 - Single sign-on and integration with our portal
 - Immediate dashboard reporting capabilities
 - Supported by Oracle’s overall product strategy



Dashboard Offerings from CIBER

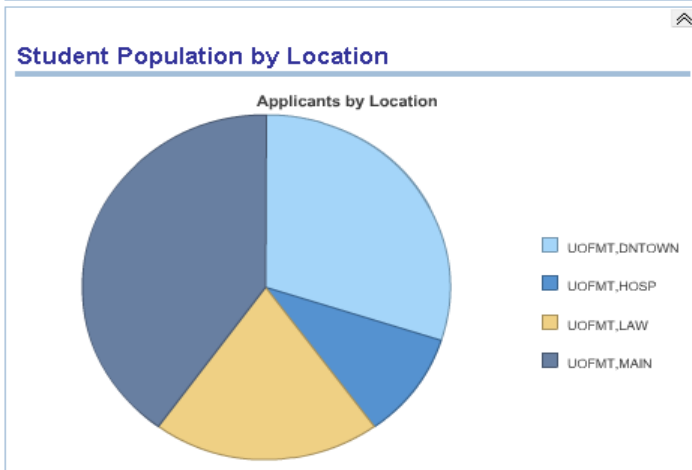
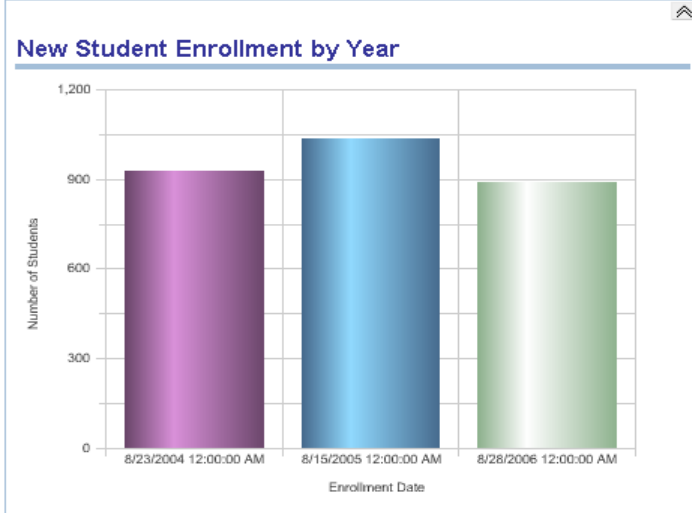
Some of the dashboards are still being developed, like IPEDS as the report change by the U.S. Dept of Education.

- Institutional Lifecycle - A view of the institution lifecycle that includes charts that provides the institution a look at holistic views of institutional data, such as, suspects/prospects, applicants, matriculated students, cohorts, graduates, and alumni. The lifecycle can compare years for historical views, trends, etc.
- Student Records - Ability to identify at risk students, by mid-terms and/or student attributes by advisor.
- Admission & Student Records - Tracking institutional events (via Campus Community) such as, new student orientation, and comparing the need for class sections prior to enrollment. Predictive course/class demand.
- Financial Aid - Comparison of expenditures by financial aid item types, across financial aid recipients by financial aid recipients attributes. This is a comparison across Student Finance and Financials.
- Student Financials - Comparison of charges for tuition, fees, installation plans, etc. to provide the institution valuable revenue & expenses information.
- IPEDS - *Currently in progress* due to the changes to the data model by the U.S. Department of Education. This report will include all nine (9) sections as required by the DOE.

Paint Dashboard

Institutional Lifecycle

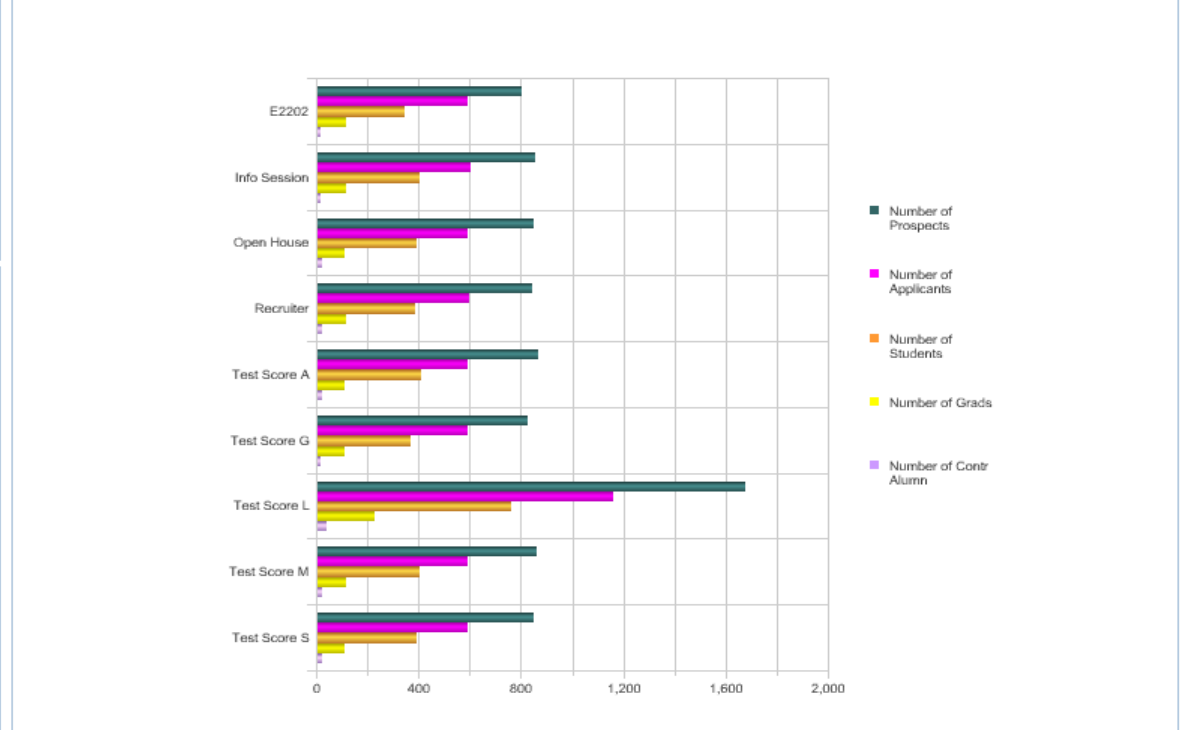
- Historical Snapshots
- Institutional Research
 - Counts by Referral Source
 - New Student Enrollment by Year
 - Student Population by Location



Student Life Cycle

Prospects -> Applicants -> Students -> Grads -> Alumn
By Original Referral Source

Original Referral Source	Number of Prospects	Number of Applicants	Number of Students	Number of Grads	Number of Contr Alumn
E2202	804	593	347	119	20
Info Session	859	606	402	119	20
Open House	848	595	391	111	21
Recruiter	845	600	388	119	23
Test Score A	868	590	411	112	21
Test Score G	826	595	369	112	20
Test Score L	1679	1161	765	230	40
Test Score M	863	594	406	119	21
Test Score S	851	592	394	114	22



Paint Dashboard

Term

2004 Fall

Cancel Go

At Risk Counts

By Term (2.0 or lower)

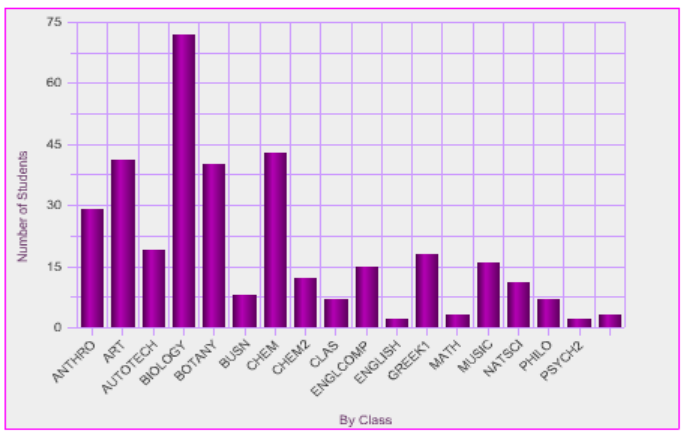
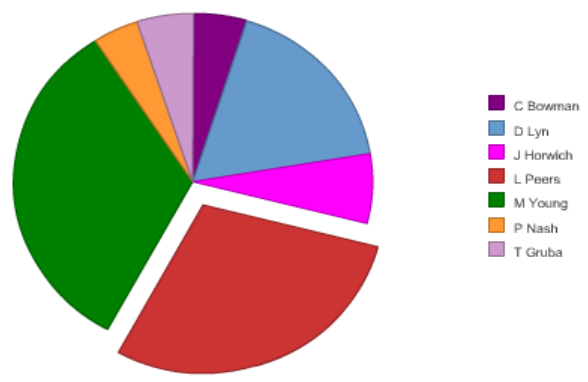
TERM	GPA	Number of Students
2004 Fall	0.62	12
	0.98	11
	1.12	44
	1.49	43
	1.95	8
	1.99	8
	2.00	16
2005 Fall	0.62	5
	0.98	1
	1.12	5
	1.49	4
	1.95	6
	1.99	5
	2.00	36
2005 Spring	0.62	8
	0.98	13
	1.12	11
	1.49	13
	1.95	44
	1.99	40
	2.00	6
2006 Fall	0.62	10

Records 1 - 25

Term

2004 Fall

Cancel Go

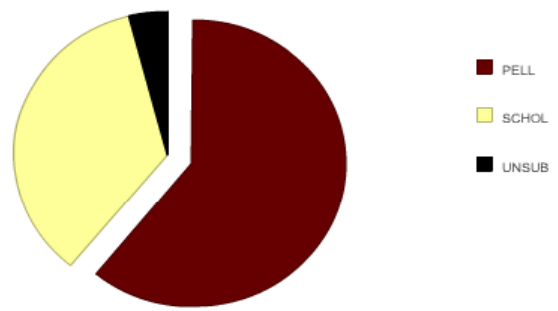


Paint Dashboard



Number of Students per Source

of Students



TERM	MAJOR	Source	# Students
2004 Fall	BA	PELL	170
		SCHOL	84
	BS	PELL	174
		SCHOL	76
	MBA	UNSUB	19
MD	UNSUB	1	
2005 Fall	BA	PELL	107
		SCHOL	69
	BS	PELL	112
		SCHOL	66
	JD	UNSUB	3
	MBA	UNSUB	3
	MD	UNSUB	11
MS	UNSUB	3	
2005 Spring	BA	PELL	174
		SCHOL	64
	BS	PELL	174
		SCHOL	63

Installment Plan Stats by Term

TERM	PLAN	# Students	Avg Pymt	Avg # Days
2004 Fall	2 EP IS	252	9,873	164
	2 EP Law	35	19,578	180
	2 EP Metro	58	13,077	149
	2 EP OS	145	19,248	177
	2 EP WUE	148	12,887	152
	30 Day	103	115	22
	90 Day	30	242	98
2005 Fall	2 EP IS	156	9,873	164
	2 EP Law	59	19,578	180
	2 EP Metro	42	13,077	149
	2 EP OS	97	19,248	177
	2 EP WUE	93	12,887	152
	30 Day	80	115	22
2005 Spring	2 EP IS	233	9,873	164
	2 EP Law	63	19,578	180
	2 EP Metro	59	13,077	149
	2 EP OS	160	19,248	177
	2 EP WUE	151	12,887	152
	30 Day	78	115	22
2006 Fall	2 EP IS	181	9,873	164
	2 EP Law	25	19,578	180
	2 EP Metro	47	13,077	149
	2 EP OS	104	19,248	177
	90 Day	24	242	98

Dashboard Offerings from Oracle

Admissions & Recruiting: Examines applicant rates, admission rates, and the performance of recruiting centers. Key capabilities include:

- Track prospect-to-applicant-to-student conversion rates
- Compare applicant rates and recruiting effectiveness year-over-year by academic program, student demographics, etc.
- Track transfers by institution and degree program to give advisors the information they need to help students shorten time-to-graduation

Student Records: Examines course enrollment trends and student academic standings. Key capabilities include:

- Analyze student admissions, course catalog, class scheduling, student career term records, and the enrollment process to assess the effectiveness of academic programs
- Track average GPA by campus, career, and program as well as the average time-to-graduate.
- Track and analyze faculty workload to ensure a balanced faculty-to-student ratio.

Student Financials: Examines the source and status of all student financial transactions with the institution. Key capabilities include:

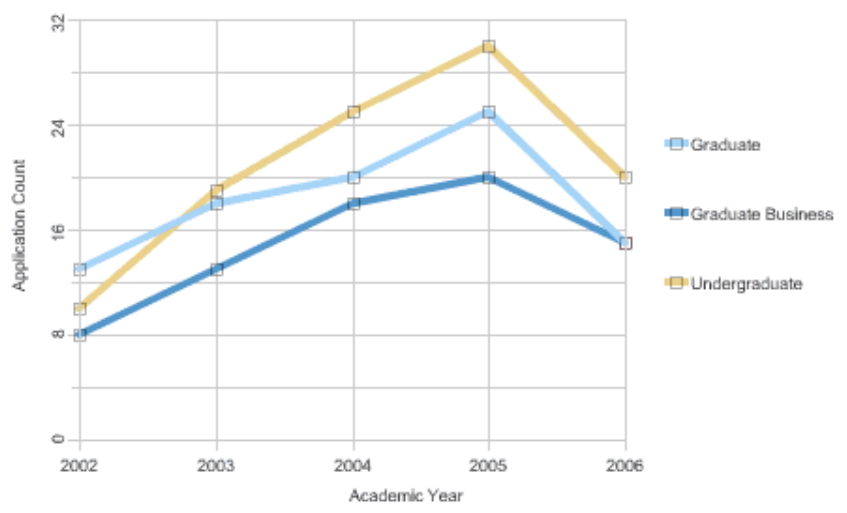
- Measure average tuition by accounting period, program, and fund as well as individual student awards and amount.
- Track percentage of total tuition revenues generated from institutionally-funded awards, lending institutions, and other funding sources.
- Tie student financials information back to student recruiting, enrollment, and time-to-graduation to determine the impact of financial aid on student retention and success.

Institution ... Campus ... Admit Term ... Academic Level ... Academic Career ... Academic Program ... Academic Plan ...

Academic Year ...

Applicant Trends

View By Select View

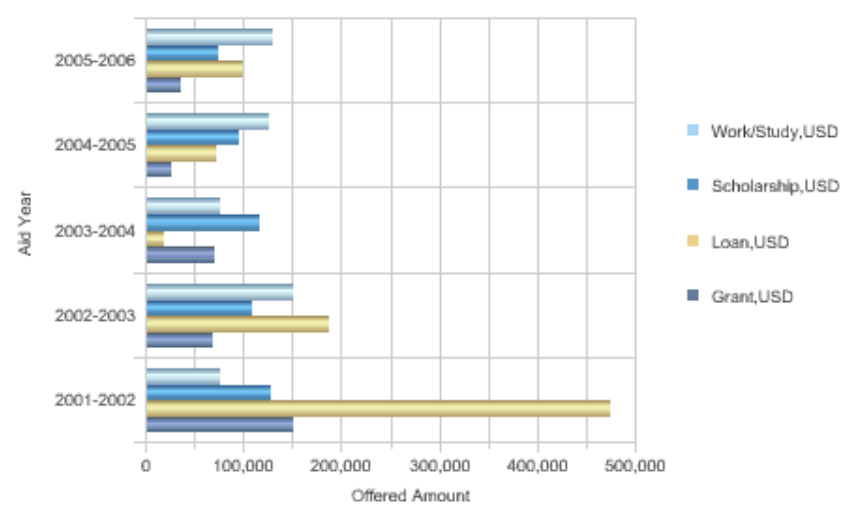


[Modify](#) - [Refresh](#) - [Print](#) - [Download](#)

Aid Year ...

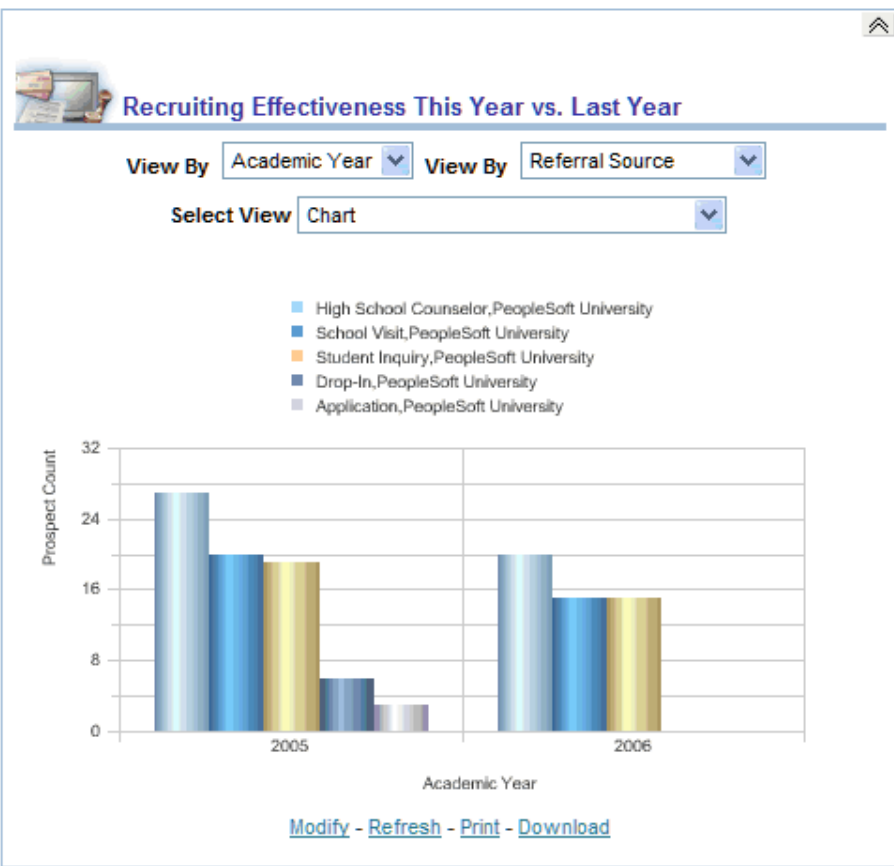
Award Disbursement Trends

View By Measure Select View



[Modify](#) - [Refresh](#) - [Print](#) - [Download](#)

Institution ... Campus ... Admit Term ... Academic Year ... Academic Level ... Academic Career ... Academic Program ... Academic Plan ... Go



Prospect-to-Applicant-to-Student Rates This Year vs. Last Year

Analyze details on applicant status via the link on Applicant Count in Table or Pivot Table view

Select View

	PeopleSoft University	
	2006	2005
Prospect Count	50	75
Applicant Count	28	53
Enrollee Count	11	43
Prospect-to-Applicant Conversion Rate	56.00%	70.67%
Applicant-to-Enrollee Conversion Rate	39.29%	81.13%

Prospect-to-Applicant Conversion Rate Legend:

< 50% 50-65% > 65%

Applicant-to-Enrollee Conversion Rate Legend:

< 50% 50-65% > 65%

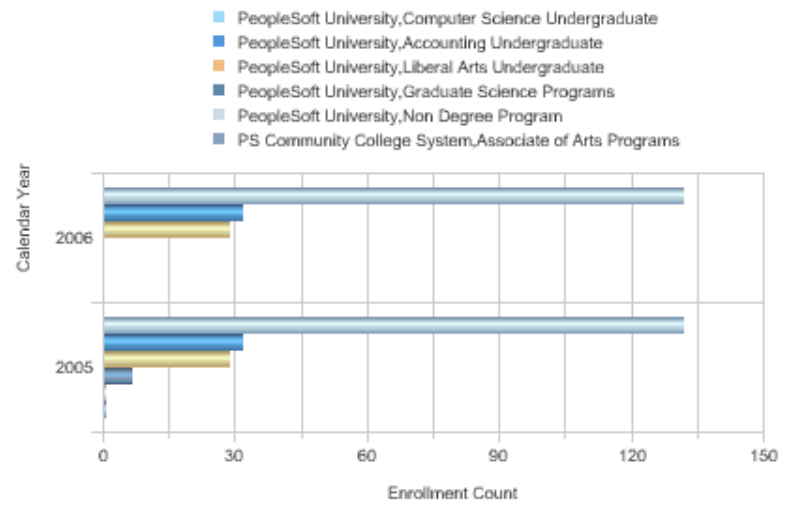
[Modify](#) - [Refresh](#) - [Print](#) - [Download](#)

Institution ...
 Academic Level ...
 Academic Career ...
 Academic Program ...
 Academic Plan ...
 Go

Calendar Year ...
 Session Term ...
 Go

Class Enrollment Analysis

View By Academic Program

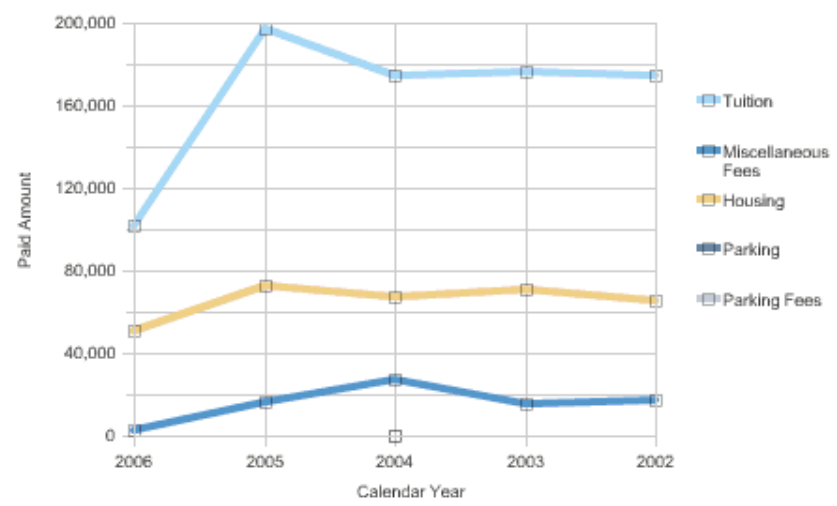


Calendar Year	Institution	Academic Program	Course	Enrollment Count
2006	PeopleSoft University	Computer Science Undergraduate	Application User Interface	62
	PeopleSoft University	Computer Science Undergraduate	Data Warehouse 101	51
	PeopleSoft University	Computer Science Undergraduate	Computer Programming 101	41
	PeopleSoft University	Accounting Undergraduate	Business Accounting 101	32
	PeopleSoft University	Liberal Arts Undergraduate	Psychology 1A	29
	PeopleSoft University	Computer Science Undergraduate	English Literature	20
	2005	PeopleSoft University	Computer Science Undergraduate	Data Warehouse 101
PeopleSoft University		Computer Science Undergraduate	Application User Interface	62
PeopleSoft University		Accounting Undergraduate	Business Accounting 101	32
PeopleSoft University		Liberal Arts Undergraduate	Psychology 1A	29

Institution Academic Career

Calendar Year Account Type

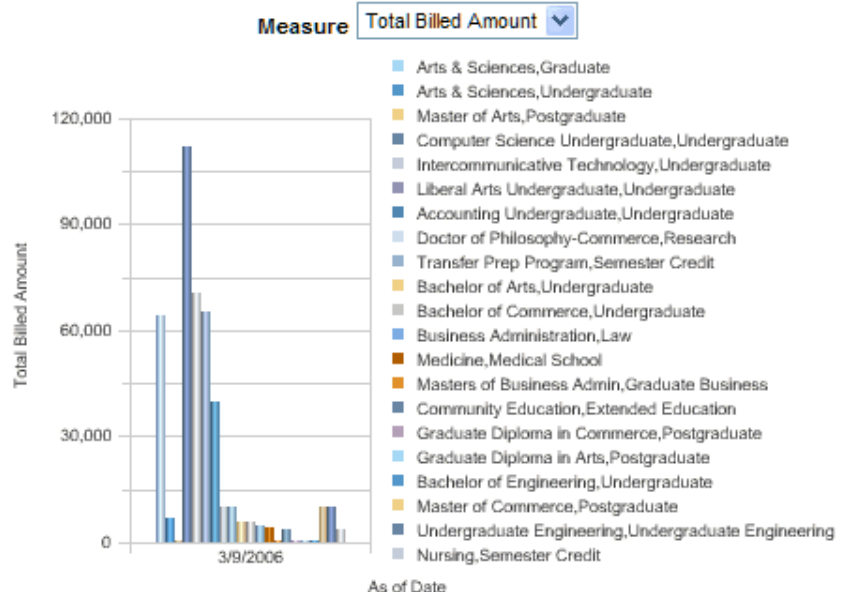
Student Receivables by Type



Calendar Year	Institution	Account Type	Currency Code	Paid Amount
2006	PeopleSoft University	Tuition	USD	102,000
		Miscellaneous Fees	USD	3,062

As of Date Academic Program
 >=

Student Receivables by Program



As of Date	Institution	Academic Program	Academic Career Desc	Currency Code	Total Billed Amount
	PS Community College System	Arts & Sciences	Graduate	USD	5,100
		Master of Arts	Postgraduate	USD	75

LUMC Follow-Up

- Lawson upgrade
 - Hardware upgrade completed three weeks ago
 - The software upgrade is in two major phases: underlying technology and application. No dates have been set; Roger will work with Tom Kelly and Bill Laird.
- LUMC/LUC SIS data integration issue
 - SSOM needs a record layout for an extract of needed information, and will do their best to fill in the fields and run the extract as needed.
 - This would not address the process issues and distracts upgrade resources; suggest to defer
- New scorecard items
 - Website “interoperability”
 - LMS
 - BSR
- Intercampus video conferencing update
 - Older monitors have been replaced with 42” High Definition (HD) screens
 - Piloted HD cameras with great results. We will re-establish this configuration for the May 23rd Campaign meeting for broader endorsement of solution
- SSOM BCDR planning discussion
 - TBD

Student Equipment Recommendations

- Investigating opportunity and timing with Discover Loyola sessions
- “Good”, “Better”, “Best” approach
- Leverage vendor relationships
 - Dell Student Purchase Program first
 - Apple Program could follow



Example



California State University - Sacramento (Personal Purchases)

Custom

Support

Contact

Order Status

E-Quotes

My Cart

Logout

Buy Online or Call 1-888-967-3355

Welcome to CSU, Sacramento Personal Purchases for student, staff and faculty.

Hornet Bookstore
Home Page

HORNET BOOKSTORE COMPUTER DEPARTMENT

Great Prices For Your Computer Needs

The Computer Department at the Hornet Bookstore supports the computer needs of students, staff, and faculty at Sacramento State.

ATTENTION STUDENTS!

Qualified students will find special prices by shopping online for products from [Apple](#), [Dell](#), and [Gateway](#). Simply visit the site to make your purchase. For added convenience, your product will be shipped directly to your home!



Computers

- [Apple Computers](#)
- [Dell Computers](#)
- [Gateway Computers](#)

Additional Information

- [Eligibility Requirements](#)
- [Microsoft Licensing Agreement](#)
- [Repair Service](#)



California State University - Sacramento (Personal Purchases)

Software & Peripherals

Standard Configurations

Custom

Support

Contact

Order Status

My Cart

Logout

You are here: Premier Home

Premier Welcome to Your Improved Premier Online Portal!

Standard Configurations

Messages

SPECIAL OFFERS

E1501 Special Offer - Very Limited Time Only!

Featured at
~~\$1,132~~
\$899



- AMD Turion™ 64 X2 Dual-Core Mobile Technology TL-50
- 1GB DDR2 SDRAM at 533MHz, 2 Dimm
- 120GB 5400RPM SATA Hard Drive
- FREE Upgrade to Genuine Windows Vista™ Home Premium with 1GB of memory
- 8X CD/DVD Burner (DVD+/-RW) with double-layer DVD+R write capability
- Dell Wireless 1390 802.11g Mini Card (54Mbps)
- Nylon Backpack Carrying Case
- 1Yr Ltd Warranty and At-Home Service

Making it easier for you!

Your site offers quick access to information to efficiently manage all phases of IT product ownership: purchasing, asset management, and support.

[▶ Read More](#)

[▶ Contact Your Account Team](#)

Featured Peripherals

[View All](#)

Sub-Committee Reports

- Academic Technology Committee
 - Last meeting 3/29/07; next meeting scheduled 4/26/07
 - Two policies discussed and drafted; final for submission to ITESC
 1. Archival policy for old courses in BlackBoard
 2. Department Chair approval for access to old content left by former faculty
 - Prioritized list of topics being assembled based on meeting discussions
- Architecture Review Board
 - 4 meetings conducted to date, last meeting 4/17/07
 - Go forward meetings are twice monthly
 - LUC's approach to enterprise architecture was validated at the Mid-West Educause conference
 - 20 architectural principles are being detailed
 - Set of guidelines to be applied to increase the consistency and quality of technology decision making.

Sub-Committee Reports

- Personal Information Risk Group (PIRG)
 - Last meeting 3/26/07; Next meeting of full group 4/30/07
 - 8 policies approved by PIRG and reviewed by Internal Audit
 - The suite of policies have recently been sent to the ITESC and GC; once approved they will go to the UCC
 - Final PIRG Effort: Education and awareness program
 - Future: Identify and Publish Subsequent Phases and Recommendations
- Project Review Board
 - Last meeting 3/21/07; Meetings scheduled 4/23/07, 5/21/07, 6/18/07
 - All IN-PROGRESS, HIGH priority projects were reviewed by team. 14 marked as COMPLETED; two stopped awaiting further info
 - IN-PROGRESS MEDIUM and LOWs to be reviewed at next meeting
 - Short discussion on impact of SIS upgrade on projects was held. Projects will be impacted by the upgrade due to people resource unavailability.
 - Critical projects will be worked either by LUC staff or contractors where needed.
 - Newly purchased Marketplace tool was discussed as a tool to create an online shopping cart capability for several educational offerings.

Proposed Next Agenda

- Next ITESC meeting scheduled May 18, 1 – 3 PM
 - Proposed Schedule
 - Sub-Committee priorities by June 1 for FY08 Q1-Q2 POR
 - ITESC review and approve in **June 15 meeting**
 - Review past action items for closure
 - Prioritize focus areas

