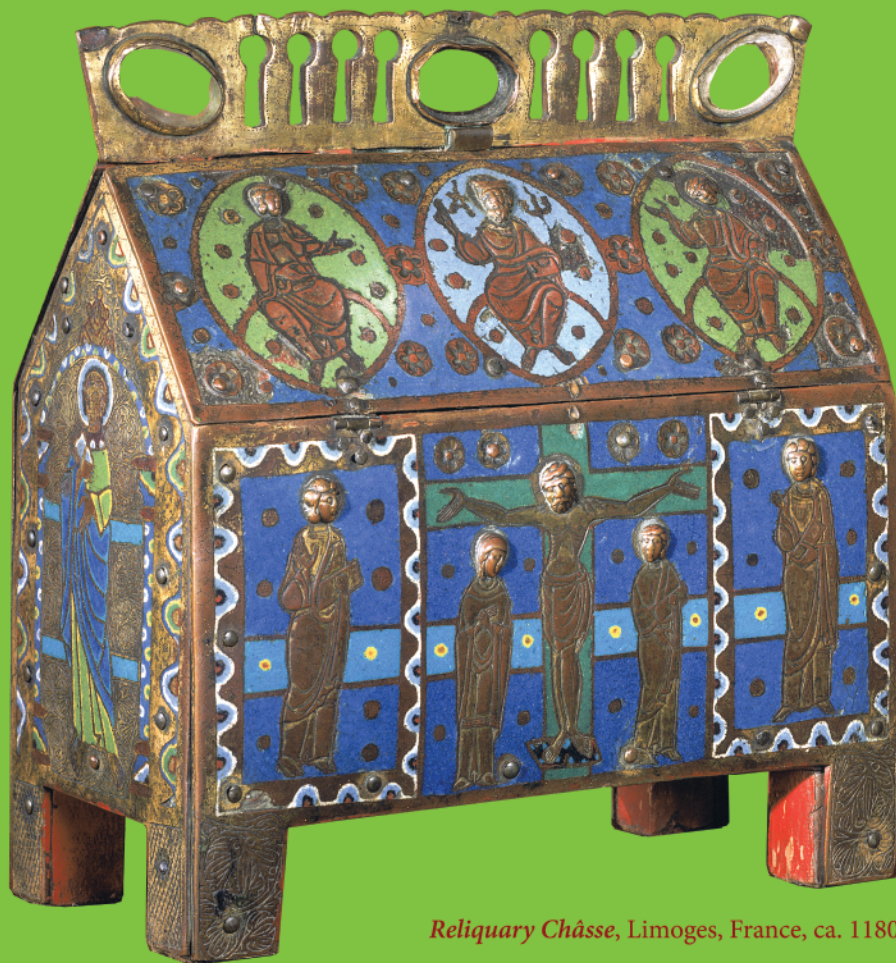


LUMA

LOYOLA UNIVERSITY  
MUSEUM of ART

# Activity Guide

for kids and their grownups

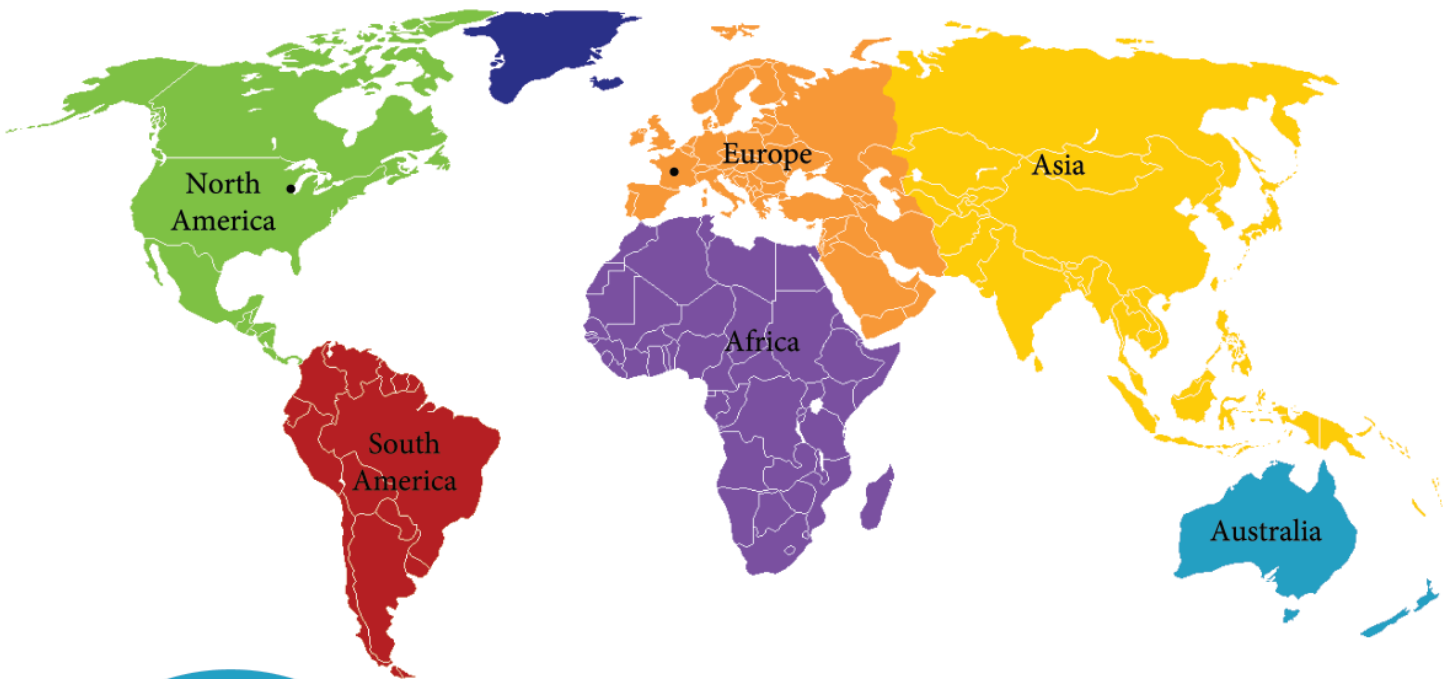


*Reliquary Châsse, Limoges, France, ca. 1180*

Let's take a  
closer look!



The **Reliquary Châsse** was made in Limoges, France. Can you find Limoges on this map? Where is Chicago?



### PRONUNCIATION GUIDE

châsse= “shass” rhymes  
with “mass”

Limoges= “lee MÔJ”  
circa = “SIR kah”

### DEFINITIONS

- \*châsse = box that holds a relic
- \*ca. = circa; Latin for “about;” historians use circa when they are unsure of the exact date
- \*relic = any item associated with a saint, such as a piece of bone or clothing
- \*saint = holy person who does good works

## What Would Your Life Be Like In Medieval Times?

The medieval period was 500 to 1,600 years ago. Back then no one, not even rich people, had indoor plumbing. People bathed only for special occasions—just once or twice a year!

People who lived in medieval times seldom traveled more than 20 miles from home. One of the few occasions to go abroad was on a pilgrimage. **What’s the furthest from home you’ve ever gone?**

During this time builders created beautiful churches that were often filled with stained glass. These windows told the stories of the Bible in pictures. **Can you find stained glass in this room?**

# Let's Take a Closer Look

- \* In medieval times people went on long journeys, called pilgrimages, to visit the relics of saints. Pilgrims believed relics had powers to heal, protect and bring good fortune.
- \* Each saint has one feast day a year. On that day, people carry the saint's reliquary (like the one we see here) through the streets. For the rest of the year, the reliquary is kept in a safe place in the church. **What things do you use only on special days? Where do you keep them?**
- \* Imagine you are a saint. **How would people celebrate your feast day? Are there special foods eaten or special clothes worn?** Finish the short story below:

It was the feast day of St. \_\_\_\_\_ (fill in your name) and everyone in the town

\_\_\_\_\_

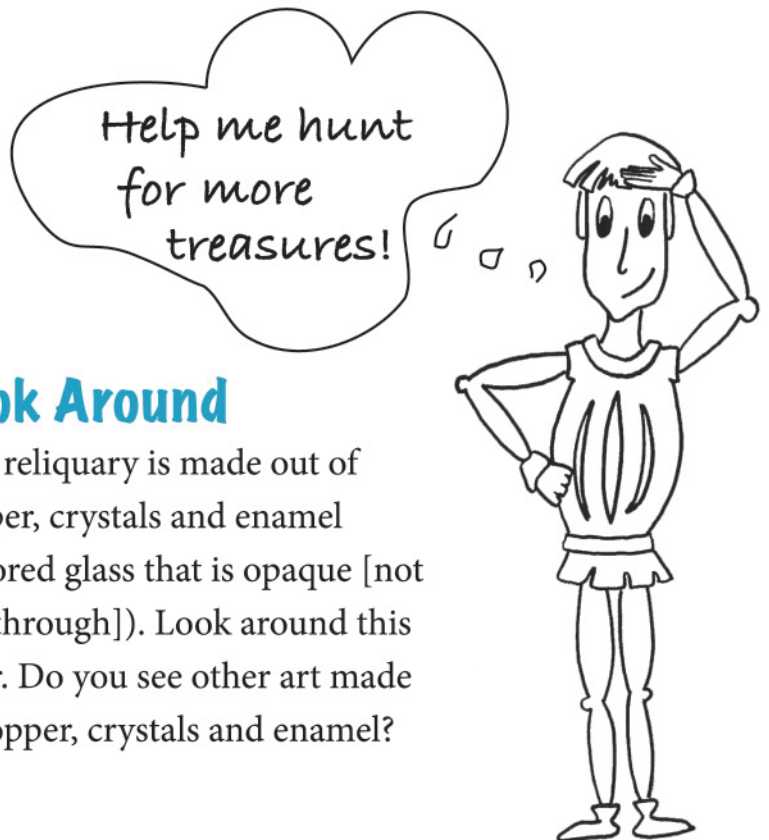
\_\_\_\_\_

\_\_\_\_\_



## Look Around

This reliquary is made out of copper, crystals and enamel (colored glass that is opaque [not see-through]). Look around this floor. Do you see other art made of copper, crystals and enamel?



# Activities

## Imagine

What treasures would you keep in a box like this one? On which special days would you bring out your treasure box?

## Discuss

If you discovered a treasure chest, what would you hope to find inside? What would you place in a treasure chest for people to discover in the future?

## Create

Decorate your own reliquary ch asse. Remember to use lots of color!

