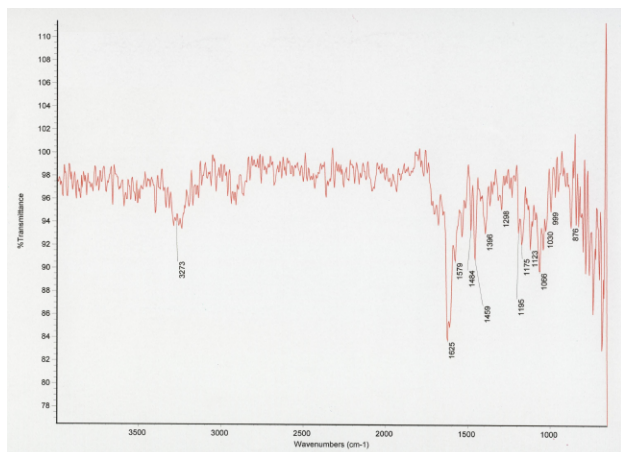
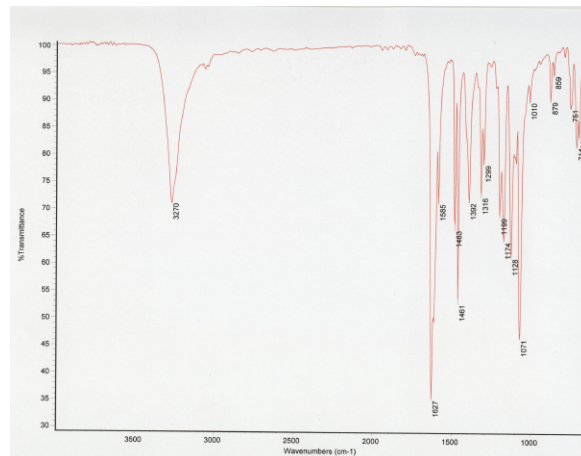


Sample 7 Blue

IR



IR spectrum of indigo sample



IR reference spectrum for indigo

Pigments identified:

Indigo

This sample was taken from the collar of San Francisco de Borja's shirt. Indigo is a natural pigment derived from a plant that has been used since ancient times in Asia, Europe, and the Americas. Although Europe had traditionally imported indigo from India, Spain received large amounts from its colonies in the New World. Thus, like cochineal, indigo was readily available to the Seville-based Lorente Germán.

To make indigo, leaves from freshly cut plants are soaked, packed into vats, and left to ferment. After fermentation, the solution is mixed with lye, pressed into cakes, dried, and ground into powder. By the end of the eighteenth century, indigo was replaced by Prussian blue, one of the first synthetic pigments.