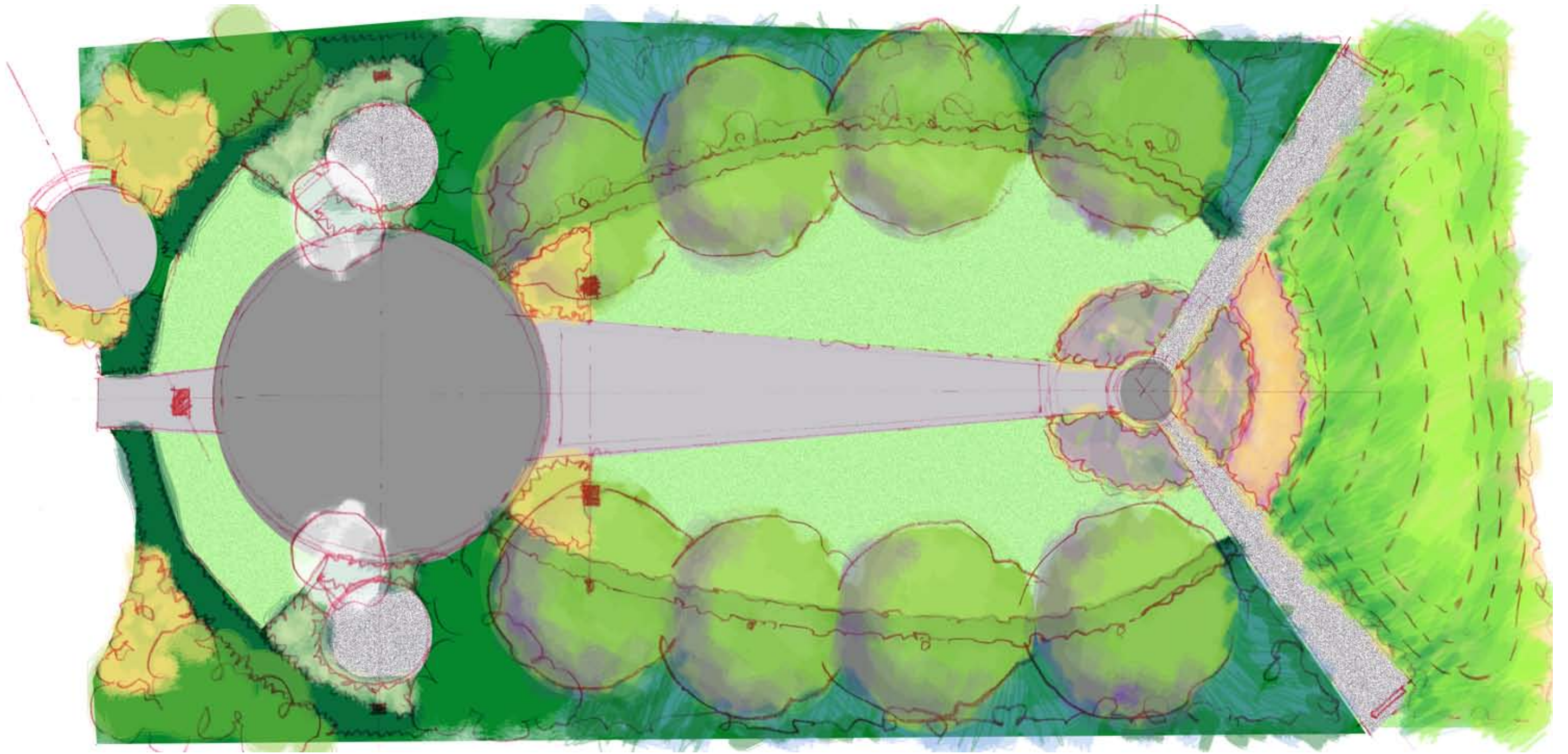


House



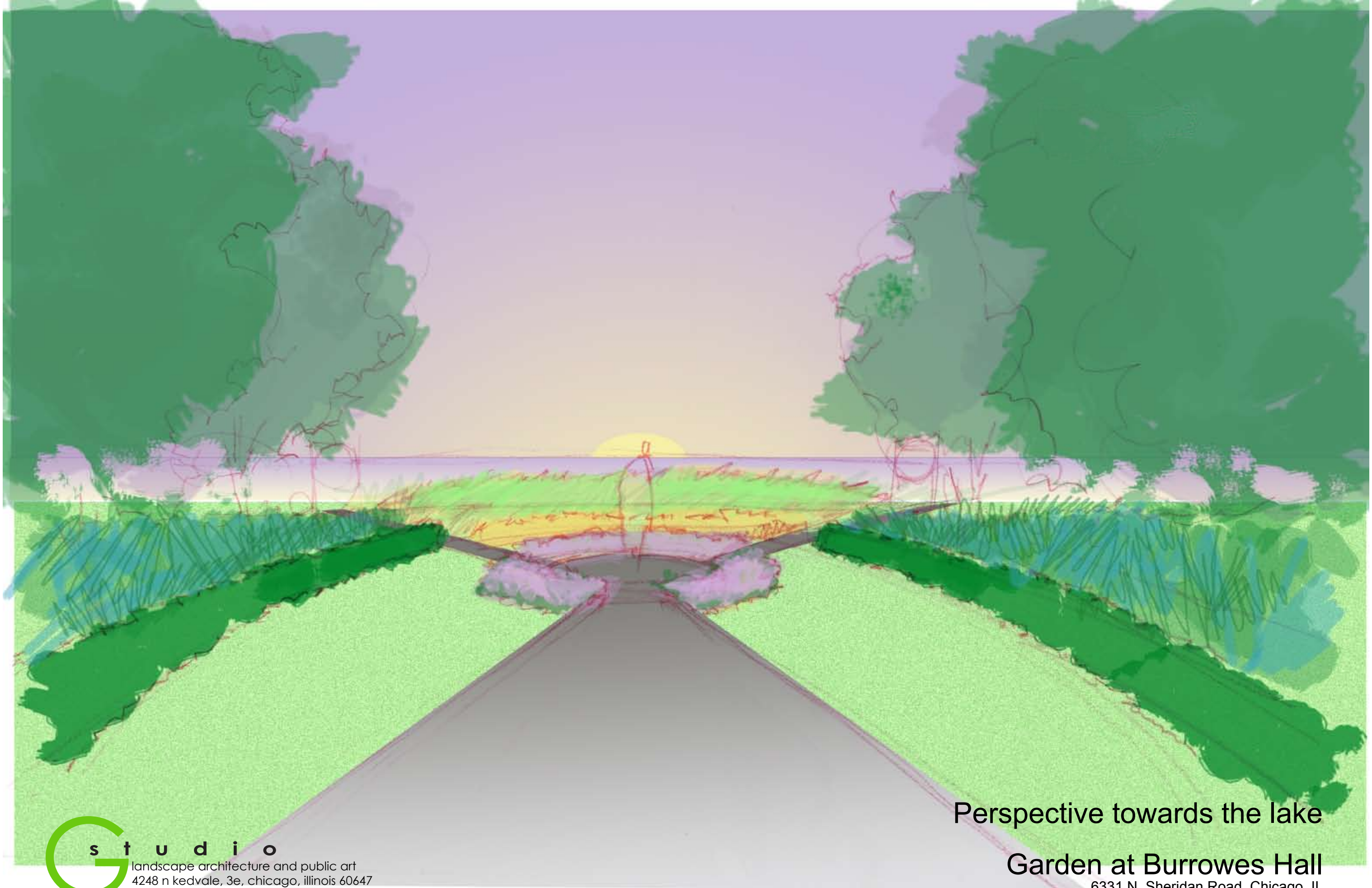
Lake Michigan

0 5 10 20



G s t u d i o
 landscape architecture and public art
 4248 n kedvale, 3e, chicago, illinois 60647
 773.732.0311 www.gstudiodesign.net

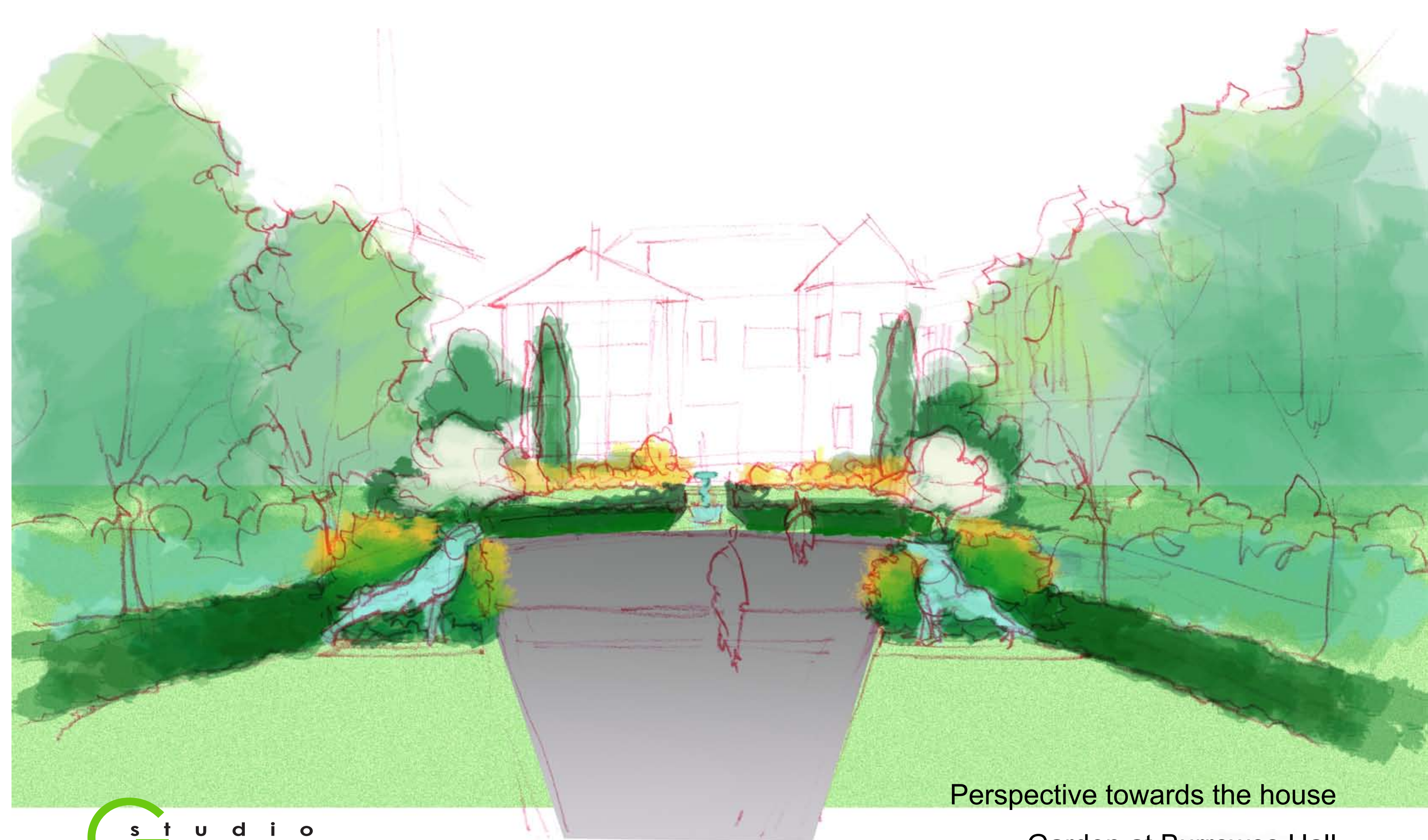
Site Plan of Garden
Garden at Burrowes Hall
 6331 N. Sheridan Road, Chicago, IL
 03/02/15



Perspective towards the lake

Garden at Burrowes Hall

6331 N. Sheridan Road, Chicago, IL
03/02/15



Perspective towards the house

Design concept

The concept incorporates many levels of symbolism to emphasize a natural and spiritual character to the design.

The duality of self and community

The site has two very specific locations. The community area and a reflection area at each end of the garden. The concept of community as a place to share and partake with your neighbors and colleagues. The reflection area is about self awareness and looking internally about who you are and your place in the universe.

Community area

The community area accommodates the desire for a medium sized gathering area (approx. 30 people). This will be a paved area designed as a medallion to further embellish the garden's character. The detailing will tie the garden into the building character.

Reflection area

The reflection area is disconnected from the surrounding community and urban landscape. Within this area are celestial connections to the rising of the sun during the Winter and Summer solstice. This scenario emphasizes an individual's placement in the universe and glorifies the movement and relationship of the Sun and the Earth.

Labrynth

This is the connection between both the community and the reflection area. The labrynth will offer a meditative experience moving from one space to the other. The labrynth ascends to the reflection area to emphasize to elevate and make the person be more mindful of the environment. Moving back to the community area is a descent. This emphasizes being humble within your group and to think of others. This is emphasized with sculptures representing the legend of the wolf and kettle. The generosity in the legend emphasizes the importance of community and being involved.

Sustainability and Performance

The design incorporates many sustainable principles and approaches. It does not take an overt approach to demonstrating this sustainability. It will utilize materials the reduce water useage, indigenous planting, and reduced water runoff. Additionally the use of the materials will provide diverse habitats for animals and insects alike.

Paving

The paving on the site will include some permeable paving, gravel, and clay pavers. The size of the site will allow for all the runoff to be captured and detained within rain gardens along the north and south property lines. The gravel paving utilizes local material and does not require deep excavation, as required by permeable paving, yet retains the water in a similar manner. The excavation from all paved areas will be reused on the site and reduce waste, trucking, and cost of the material.

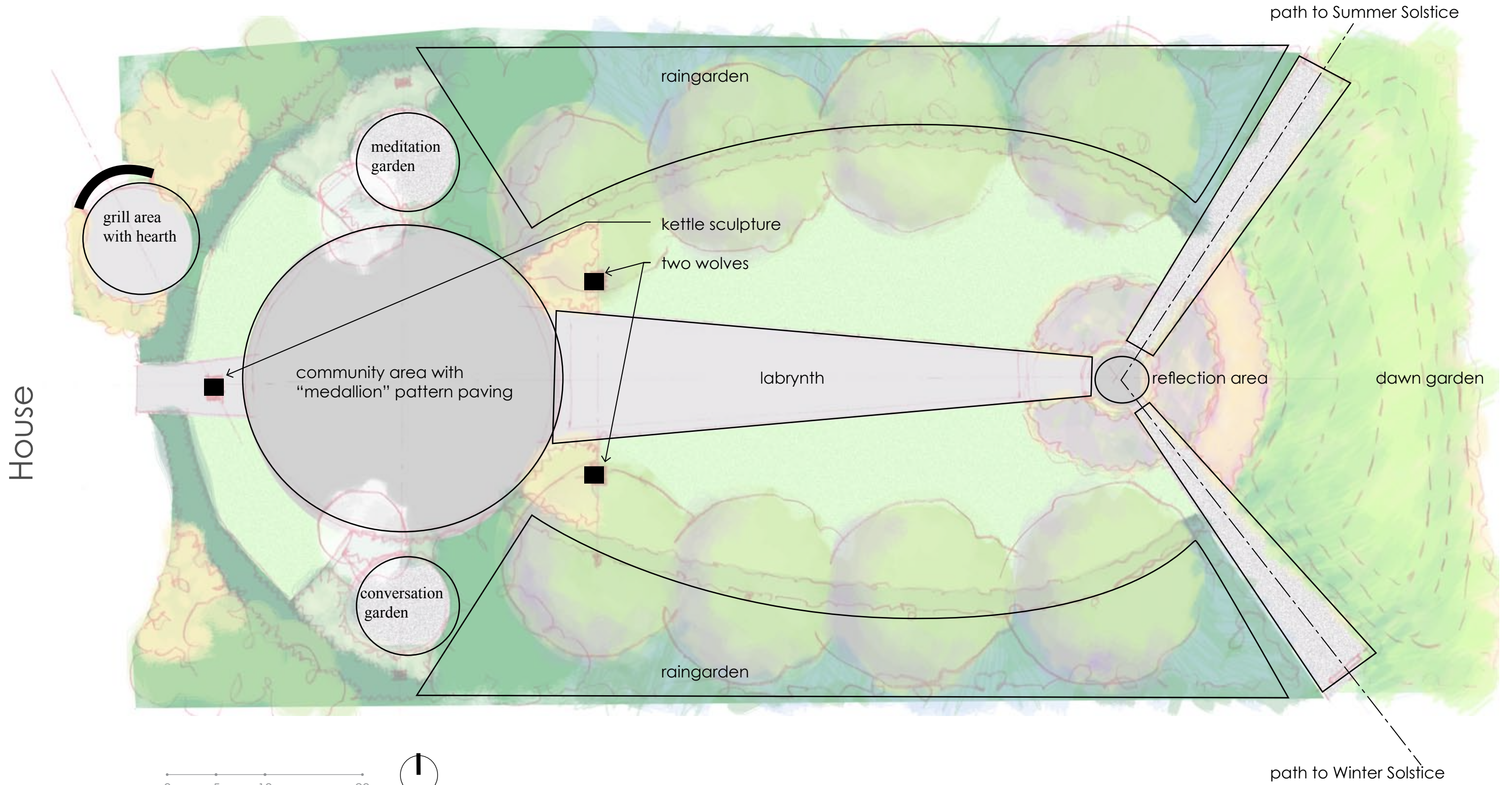
Vegetation

This will include a range of high performance materials to reuse water runoff from the paved areas and require less irrigation during drought periods. Additionally the use of indigenous and high performance materials will provide habitat for animals and insects alike. This is particularly important along the lake shore.

Lawn will be utilized adjacent to paved areas to allow for additional space for special events. Though the lawn have been reduced significantly from the existing site.

Water

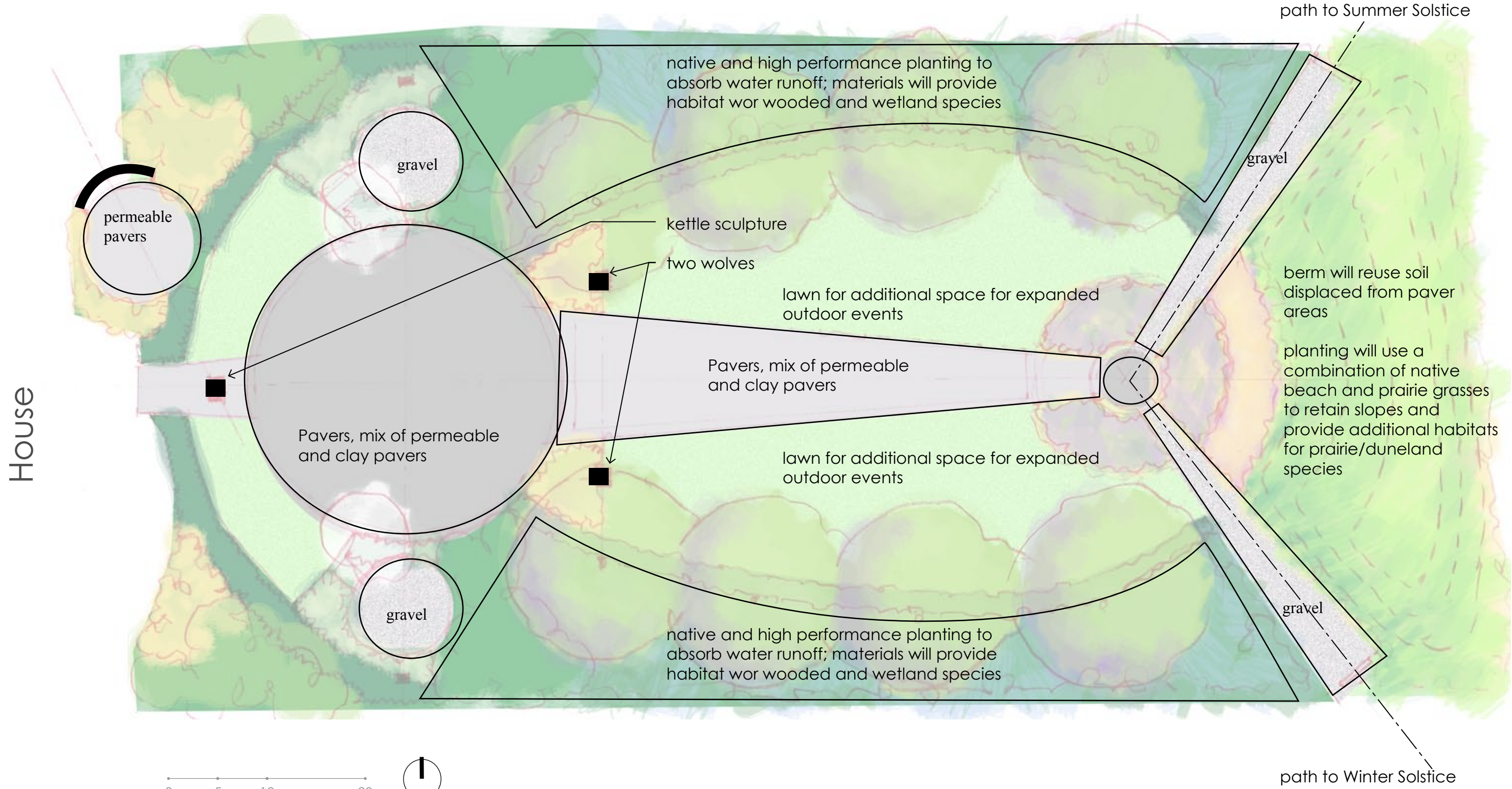
As mentioned, the water runoff will be handled within two large raingardens that border the north and south areas of the garden. Once the garden is established, there will be significantly less water requirements for the vegetation as compared to the existing lawn. The size of the site is generous enough to allow for water capture, so any paved areas can be directed into the raingardens.



Use Diagram

Garden at Burrowes Hall

6331 N. Sheridan Road, Chicago, IL
03/02/15



House

Lake Michigan

0 5 10 20



Material diagram

Garden at Burrowes Hall

6331 N. Sheridan Road, Chicago, IL
03/02/15