

2008 to 2011 Greenhouse Gas Emissions and Energy Use Report



Office of
Sustainability



GHG Emissions Overview

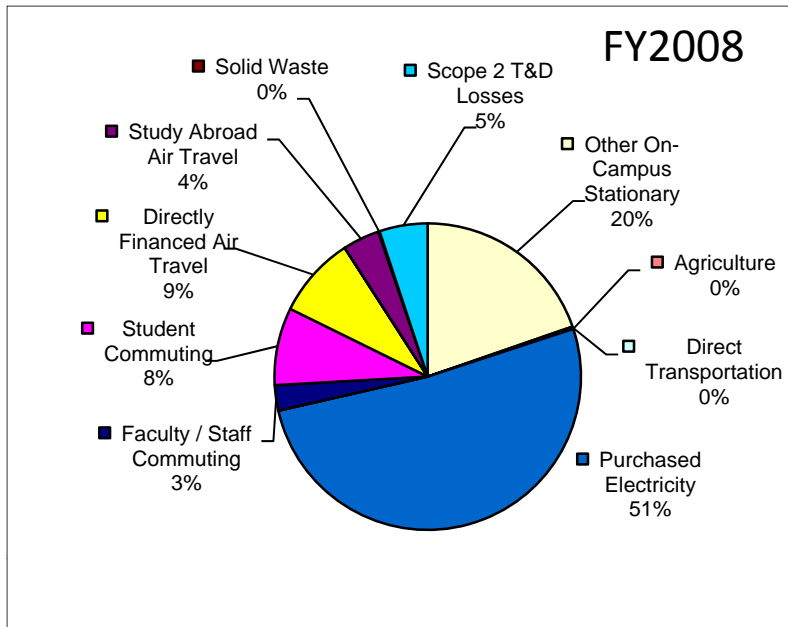
	Total (metric tons)	Offset (metric tons)	Net (metric tons)	FTS (Full Time Students)	PER FTS (metric tons)	Square Feet	PER 1000 sq.ft
2008	85,915.00	829.60	85,085.50	13,923	6.11	3,777,588	22.52
2011	80,575.80	2,207.60	78,368.20	14,341	5.46	4,094,573	19.14
# Change	(5,339.20)	N/A	(6,717.30)	418	(0.65)	316,985	(3.38)
% Change	6% reduction	N/A	8% reduction	3% increase	11% reduction	8% increase	15% reduction

NOTE:

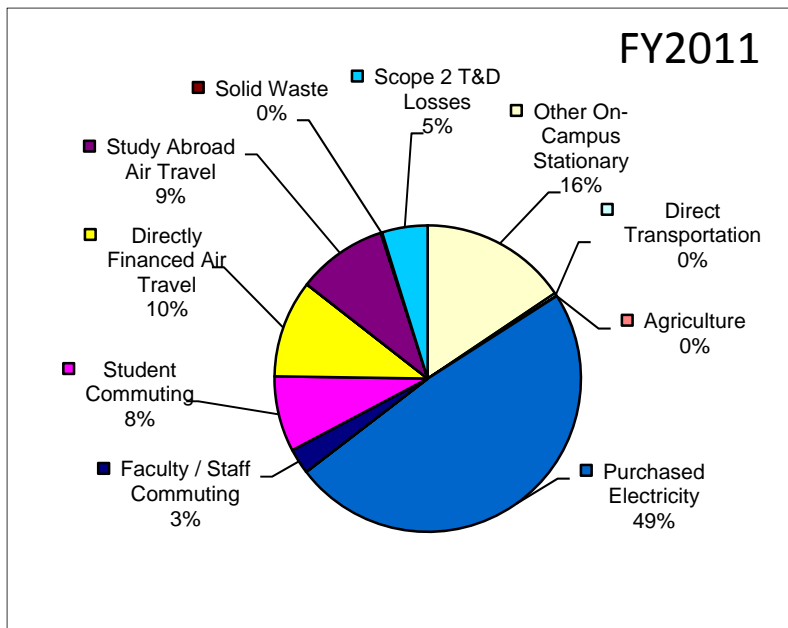
National average for doctorate granting Universities is 7.28 per FTE and 18.62 per 1,000 square feet (Source: ACUPCC - July 2012)

Includes Loyola's lakeside campuses (Water Tower and Lake Shore) only

Temporal boundary is fiscal year (July 1 – June 30)

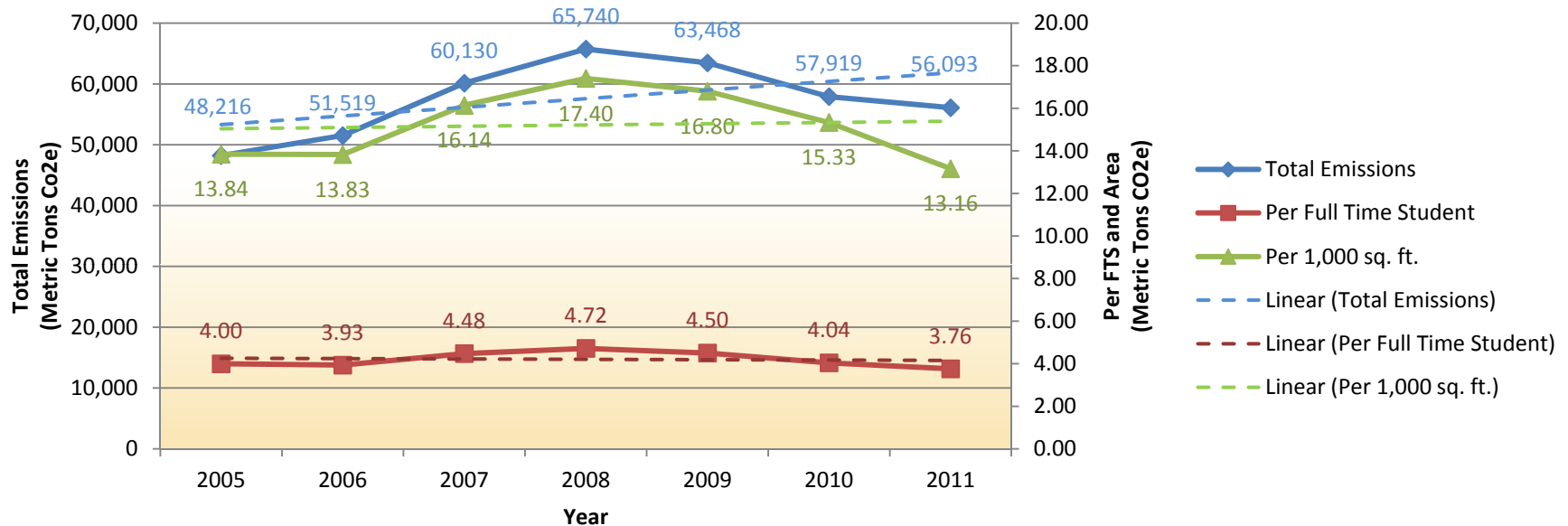


Loyola is on the right path:
Overall, an 11% reduction in emissions per student and 15% reduction per square foot of facilities.



	Total (metric tons)	Offset (metric tons)	Net (metric tons)	PER FTS (metric tons)	PER 1000 sq.ft
2008	85,915.00	829.60	85,085.50	6.11	22.52
2011	80,575.80	2,207.60	78,368.20	5.46	19.14
# Change	(5,339.20)	N/A	(6,717.30)	(0.65)	(3.38)
% Change	6% reduction	N/A	8% reduction	11% reduction	15% reduction

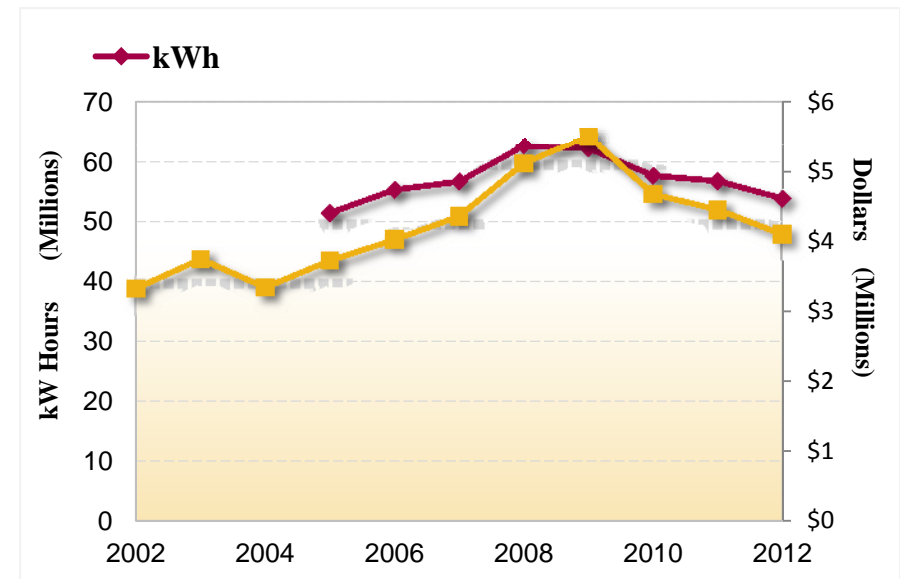
Carbon Footprint – Scope 1&2 only (2005 - 2011)



- No Scope 3 emissions are included. Due to incomplete historical information, only electricity, vehicle use, fertilizer and natural gas use are reflected in this graph.
- The trendline for total emissions is increasing but per student and per area is decreasing.
- The trend in greenhouse gas emissions at Loyola over the last four years is decreasing in all three areas.

Electricity Use and Cost (2005-2012)

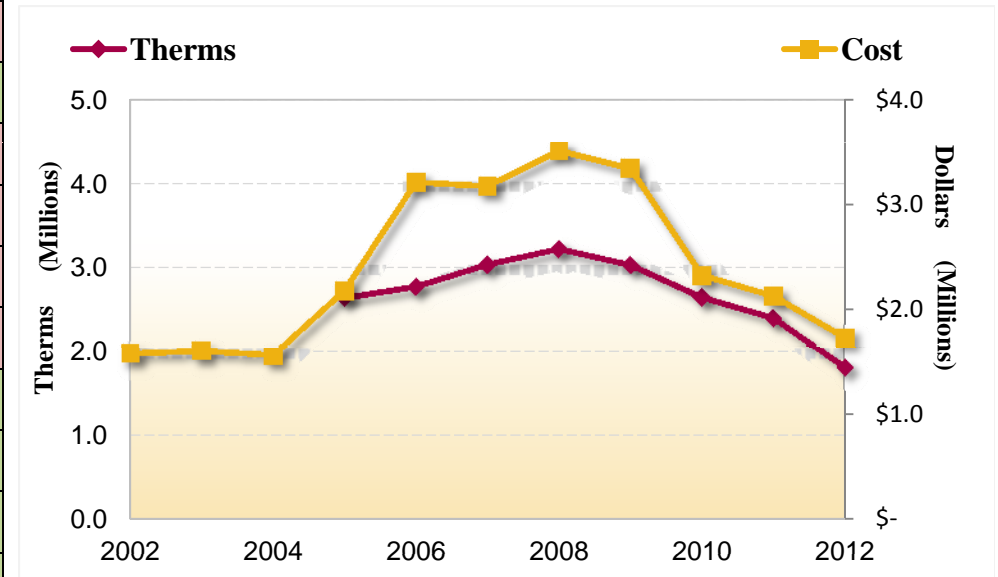
YEAR	kWh	% change	ELEC COST	% change
2002	N/A	N/A	\$ 3,305,310.37	N/A
2003	N/A	N/A	\$ 3,727,197.75	113%
2004	N/A	N/A	\$ 3,320,501.09	89%
2005	51,202,936.00	N/A	\$ 3,705,112.00	112%
2006	55,085,282.00	108%	\$ 4,006,255.00	108%
2007	56,467,055.00	103%	\$ 4,341,978.32	108%
2008	62,500,031.00	111%	\$ 5,102,615.13	118%
2009	62,041,568.02	99%	\$ 5,496,482.39	108%
2010	57,439,421.43	93%	\$ 4,657,542.05	85%
2011	56,530,663.73	98%	\$ 4,435,205.43	95%
2012	53,621,591.92	95%	\$ 4,078,527.45	92%



NOTE: Both total electrical use and cost are decreasing since 2008

Natural Gas Use and Cost (2005-2012)

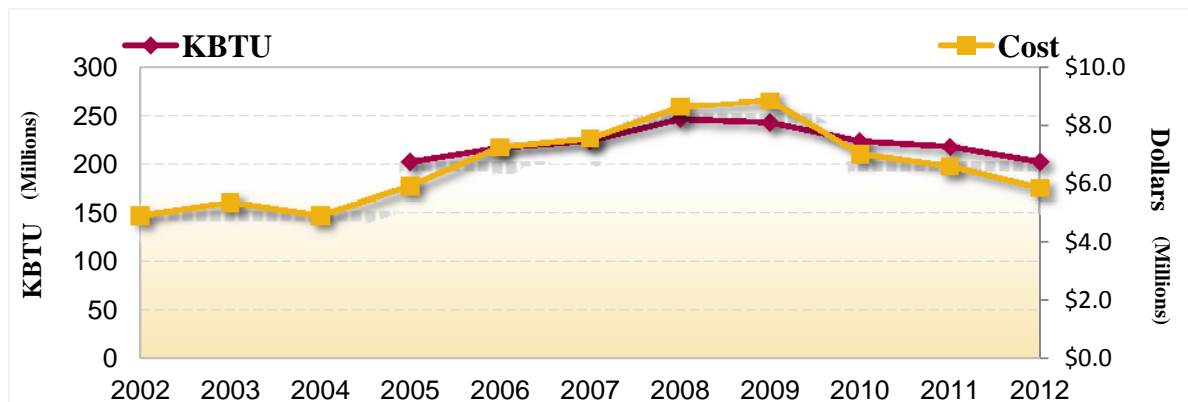
YEAR	THERM	% change	GAS COST	% change
2002	N/A	N/A	\$ 1,558,278.63	N/A
2003	N/A	N/A	\$ 1,583,243.09	102%
2004	N/A	N/A	\$ 1,543,431.44	97%
2005	2,615,635.00	N/A	\$ 2,163,089.00	140%
2006	2,750,927.00	105%	\$ 3,200,519.71	148%
2007	3,016,073.55	110%	\$ 3,162,770.27	99%
2008	3,201,705.00	106%	\$ 3,500,755.28	111%
2009	3,008,637.99	94%	\$ 3,331,060.46	95%
2010	2,622,700.72	87%	\$ 2,309,950.48	69%
2011	2,375,288.20	91%	\$ 2,111,754.79	91%
2012	1,782,529.49	75%	\$ 1,713,686.44	81%



NOTE: Both total natural gas use and cost are decreasing since 2008.

Total Energy Use and Cost (2001-2012)

YEAR	ENERGY COST	% savings	KBTU	% savings	AREA (sq.ft.)	EUI (KBTU/ft2)	Full Time Students	KBTU / Full Time Students
2002	\$ 4,863,589.00	88%	N/A	N/A	3,930,472	N/A	9,792	N/A
2003	\$ 5,310,440.84	109%	N/A	N/A	3,930,472	N/A	10,241	N/A
2004	\$ 4,863,932.53	92%	N/A	N/A	3,930,472	N/A	11,115	N/A
2005	\$ 5,868,201.00	121%	200,885,533.98	N/A	3,484,132	57.65	12,063	16,653
2006	\$ 7,206,774.71	123%	215,486,474.31	107%	3,726,132	57.83	13,096	16,454
2007	\$ 7,504,748.59	104%	222,854,520.39	103%	3,726,132	59.80	13,433	16,590
2008	\$ 8,603,370.42	115%	245,297,446.49	110%	3,777,588	65.83	13,923	17,618
2009	\$ 8,827,542.85	103%	241,801,142.98	99%	3,777,588	64.89	14,095	17,155
2010	\$ 6,967,492.53	79%	222,236,010.05	92%	3,777,588	59.64	14,337	15,501
2011	\$ 6,546,960.22	94%	216,659,418.18	97%	4,094,573	52.91	14,341	15,108
2012	\$ 5,792,213.89	88%	200,801,696.88	93%	4,094,573	49.04	14,340	14,003



Total Energy Use by Student and Area

- Total Energy Use has dropped by 18% since 2008 (Gas by 44%, Elec. By 14%)
- Total Energy Cost has dropped by 33% since 2008 (Gas by 51%, Elec. By 20%)
- Total Energy Use has not dropped since 2005 (Gas by 32%, Elec. is up 5%)
- Total Energy Cost has dropped by 1% since 2005 (Gas by 21%, Elec. is up 10%)
- Total Energy Use per student has dropped by 15% per square foot since 2005
- Total Energy Use per square foot (EUI) has dropped by 16% by student since 2005

